



# STILETTO

---

un tuffo nel colore  
*dive into colour*



## Colori/Colors

**PE** Peltro/Pewter

**CR** Cromo/Chrome

**RD** Rame Dark/Dark Copper

**RA** Rame Antico/Ancient Copper

Stiletto è un apparecchio dotato di un design raffinato ed elegante. E' possibile scegliere tra nove finiture differenti. Stiletto è un prodotto pensato per l'illuminazione di ambienti interni e dispone di caratteristiche tecniche finalizzate per l'incasso a parete o a soffitto. Il prodotto, disponibile nella versione Led, garantisce l'efficienza luminosa e permette consumi di energia minimi.

Disponibili con luci monodirezionali.

### Installazione:

incasso a parete o soffitto

### Componenti:

pressofusione di ottone, verniciato con polveri poliesteri ad elevata resistenza ai raggi UV e alla corrosione

### Portalamпада:

GU10

### Lampada:

GU10 - 3 LED 3 W / GU10 - 5 LED 5 W

Lampada non inclusa

### Cablaggio:

tensione di rete 220-240V

### Isolamento:

Classe I

### Normative:

conformità alle norme EN60598-1

### Marchio:

CE

**OL** Ottone Lucido/Shiny Brass

**ORO** Oro 24/Gold 24

**WL** Bianco Lucido/Shiny White

**WD** Bianco Dirty/Dirty White

**BRG** Bronzo Graffiato/Scratched Bronze

*Stiletto is an appliance with an elegant, sophisticated design. There is a choice of nine different finishes. Stiletto is a product that was designed for indoor lighting and has specifications intended for recessed wall or ceiling fittings. The product, available as a LED version, ensures energy efficiency and enables energy consumption to be kept to a minimum.*

*Available with mono direction emission*

### Fixing:

*wall or ceiling recessed lightings*

### Components:

*die cast brass, painted with polyester powder UV ray and corrosion resistant*

### Lampholder:

*GU10*

### Lamp:

*GU10 - 3 LED 3 W / GU10 - 5 LED 5 W*

*Lamp not included*

### Wiring:

*voltage 220-240V*

### Insulation:

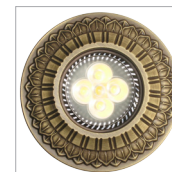
*Class I*

### Norms:

*manufactured in compliance with EN60598-1 norms*

### Mark:

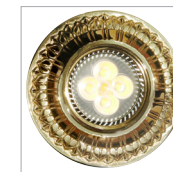
*CE*



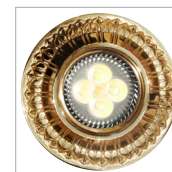
093-50-BRG



093-50-CR



093-50-OL



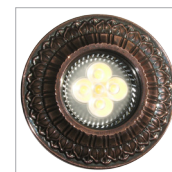
093-50-ORO



093-50-PE



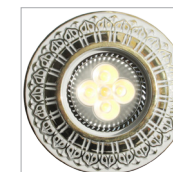
093-50-RA



093-50-RD



093-50-WD



093-50-WL



093-51-BRG



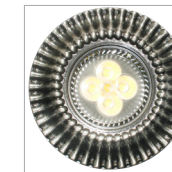
093-51-CR



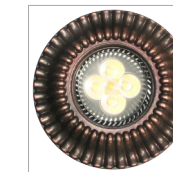
093-51-OL



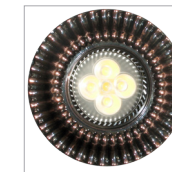
093-51-ORO



093-51-PE



093-51-RA



093-51-RD



093-51-WD



093-51-WL



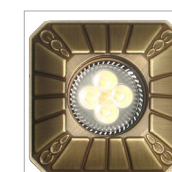
### Cod. LAMP02

**GU10** 5 LED 5W - Bianco caldo 3000° K – 500 lm  
5 LED 5W - Warm white 3000° K – 500 lm



### Cod. LAMP01

**GU10** 3 LED 3W - Bianco caldo 3000° K – 300 lm  
3 LED 3W - Warm white 3000° K – 300 lm



093-52-BRG



093-52-CR



093-52-OL



093-52-ORO



093-52-PE



093-52-RA



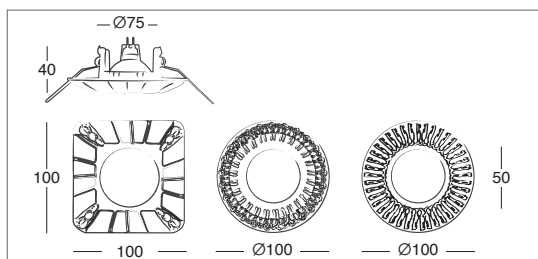
093-52-RD



093-52-WD



093-52-WL



**Framon S.p.A.**

Via Francesco Lana, 31  
25065 Lumezzane (BS) Italy  
tel: (+39) 030 8920977  
fax: (+39) 030 8922544  
info@framon.it  
www.framon.it